



HYPERMOUNT™

The HyperMount™

Introducing the fastest low-profile sanitary connect system on the planet.

The Problem

You need a hand, no doubt about it. Holding, clamping, and sealing a multi-piece sanitary connection is a slow go. It often requires multiple hands – and multiple people. And that means added stress for operators, and unnecessary risk to your equipment, processes, and operation.

The Solution

The new HyperMount™ from HOLLOWAY AMERICA is the next generation in connect technology. With the clamp assembly already integrated into the low-profile flange, the need for multiple operators is eliminated. Just position your attachments, tighten, and go. It's simple. It's easy. It's fast.

Advantages

- The integrated clamp design eliminates the hassles of missing split rings and clamps, and it's easily removed for COP, as needed.
- Compatible with the NovAseptic NovaSeptum® Sampling System and all connections that work with the *FastMount™*.
- The *HyperMount™* has the lowest profile and most clearance for process connections.
- The *HyperMount™* has a full set of installation instructions and maintenance documentation available on the HOLLOWAY AMERICA website.
- The *HyperMount™* can be CNC "coped" to any radius your installation requires, based upon your tank shell requirements.
- Simplifies connecting valves, sampling tools, sensors, etc. to your tank/pressure vessel.
- Weld mounted flange is ASME code compliant.
- CIP/SIP compatible.
- Eliminates **RISK!**

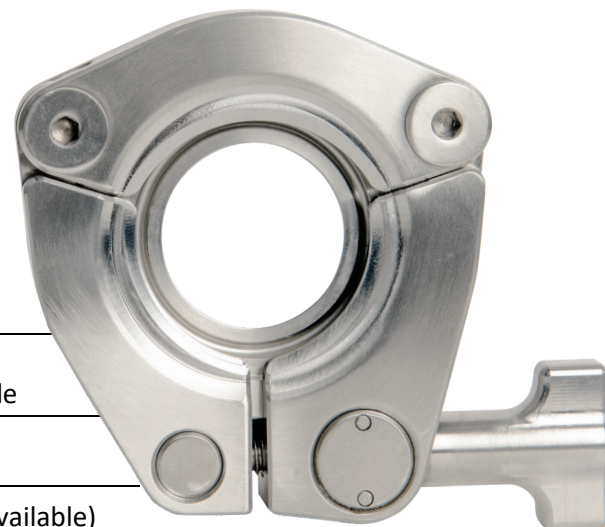


Holloway America
720 N. Cedarbrook Ave.
Springfield, MO 65802

Phone: 417.863.0077
Toll Free: 866.659.0077
Fax: 417.863.8851

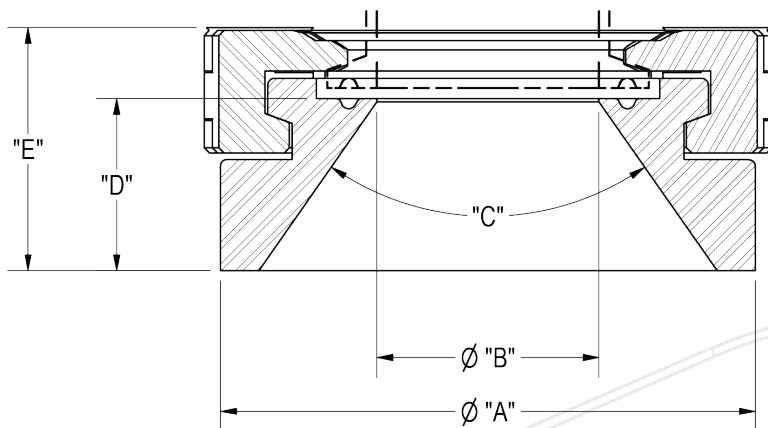
www.HollowayAmerica.com
info@HollowayAmerica.com
Datasheet: HYPER_230821

The HyperMount™



Specifications

Material Types	316L (Stocked), AL6XN, C-22
Surface Finishes	35 Ra I.D. / 35 Ra O.D. Finishes to 10 Ra (Electropolished) are available
Sizes	1/2" - 6" (Stocked in 1" - 2" upon release)
Thickness	See Table (additional heights and angles are available)
Connection Type	Welded Mounting Flange with Integrated Clamp Assembly
Design Pressure	-15 psig to 100 psig.
Design Temperature	-20° to 400° F



Dimensions

DESCRIPTION	"A" DIMENSION	"B" DIMENSION	"C" DIMENSION	"D" DIMENSION	"E" DIMENSION
HYPERMOUNT ASSEMBLY: 1/2" SIZE	2.192"	0.370"	60°	1.0625"	1.5"
HYPERMOUNT ASSEMBLY: 3/4" SIZE	2.192"	0.620"	60°	1.0625"	1.5"
HYPERMOUNT ASSEMBLY: 1" SIZE	3.3"	0.870"	70°	1.0625"	1.5"
HYPERMOUNT ASSEMBLY: 1 1/2" SIZE	3.3"	1.370"	70°	1.0625"	1.5"
HYPERMOUNT ASSEMBLY: 2" SIZE	4.23"	1.870"	75°	1.0625"	1.5"
HYPERMOUNT ASSEMBLY: 2 1/2" SIZE	5.161"	2.370"	60°	1.313"	1.750"
HYPERMOUNT ASSEMBLY: 3" SIZE	5.161"	2.870"	60°	1.313"	1.750"
HYPERMOUNT ASSEMBLY: 4" SIZE	6"	3.832"	60°	1.313"	1.875"
HYPERMOUNT ASSEMBLY: 6" SIZE	8"	5.782"	60°	1.375"	2"

* The measurements marked in **BLUE** are subject to change.



Holloway America
720 N. Cedarbrook Ave.
Springfield, MO 65802

Phone: 417.863.0077
Toll Free: 866.659.0077
Fax: 417.863.8851

www.HollowayAmerica.com
info@HollowayAmerica.com
Datasheet: HYPER_230821